

## Changing/Checking a COM Port

- Plug in the USB Serial connection from the Opto Jump unit
- Click **START**
- Click **CONTROL PANEL**
- Click **SYSTEM**

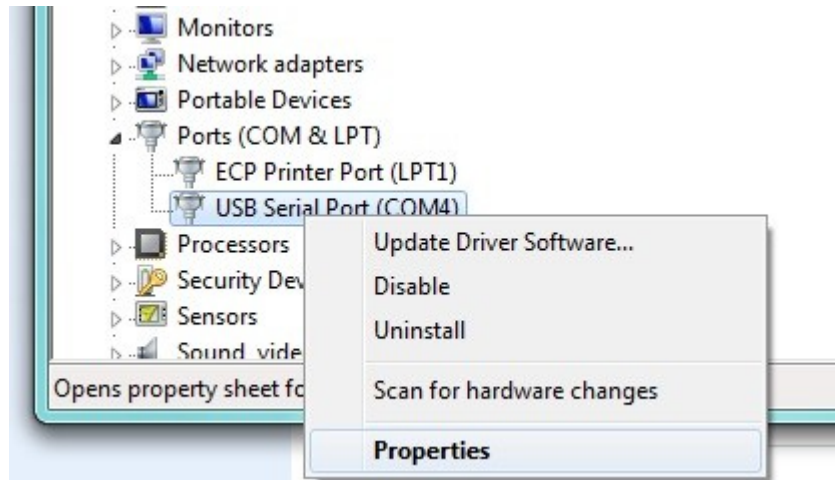


- Click **DEVICE MANAGER**

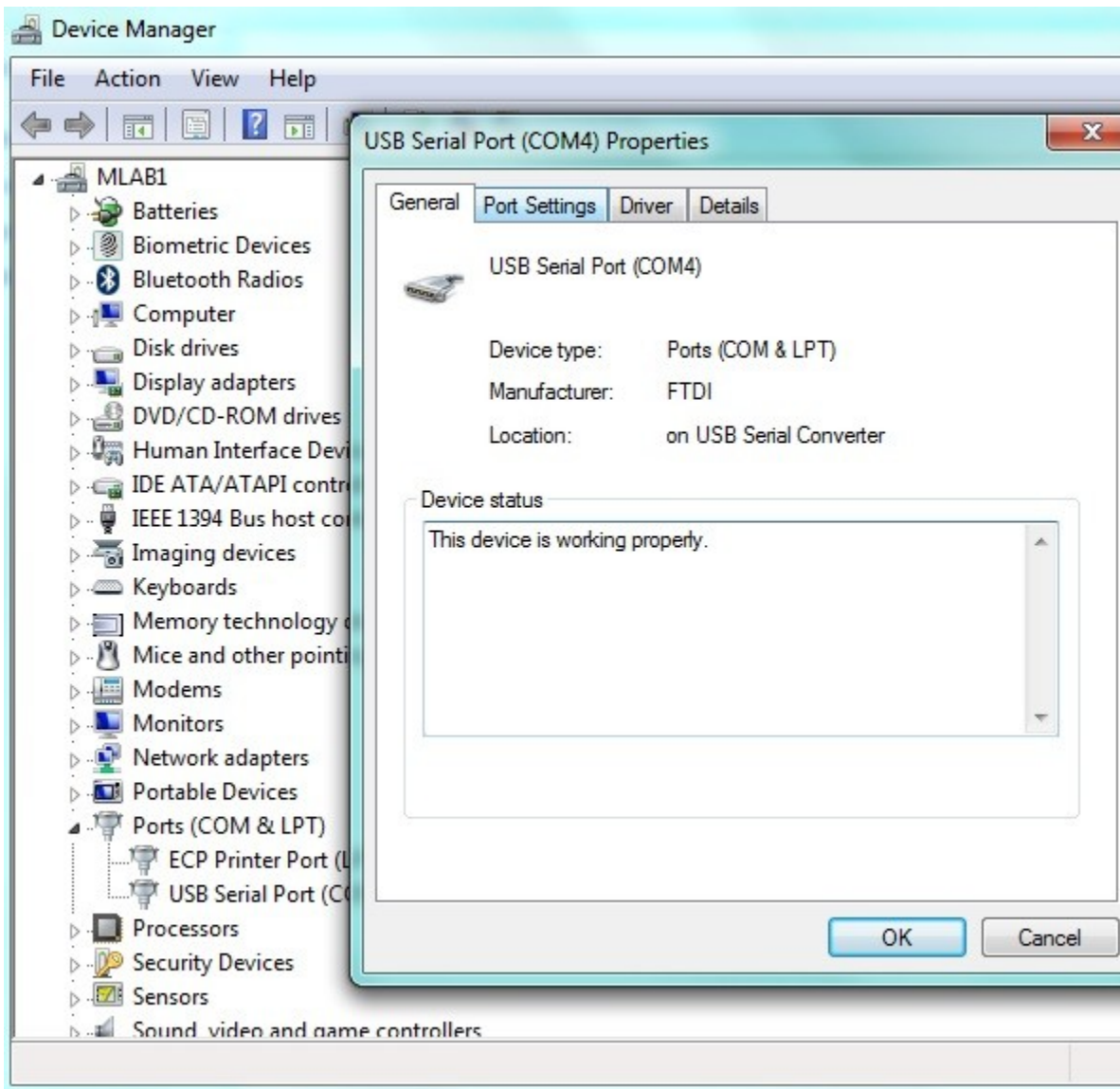


Expand **Ports (COM + LPT)** to view active ports

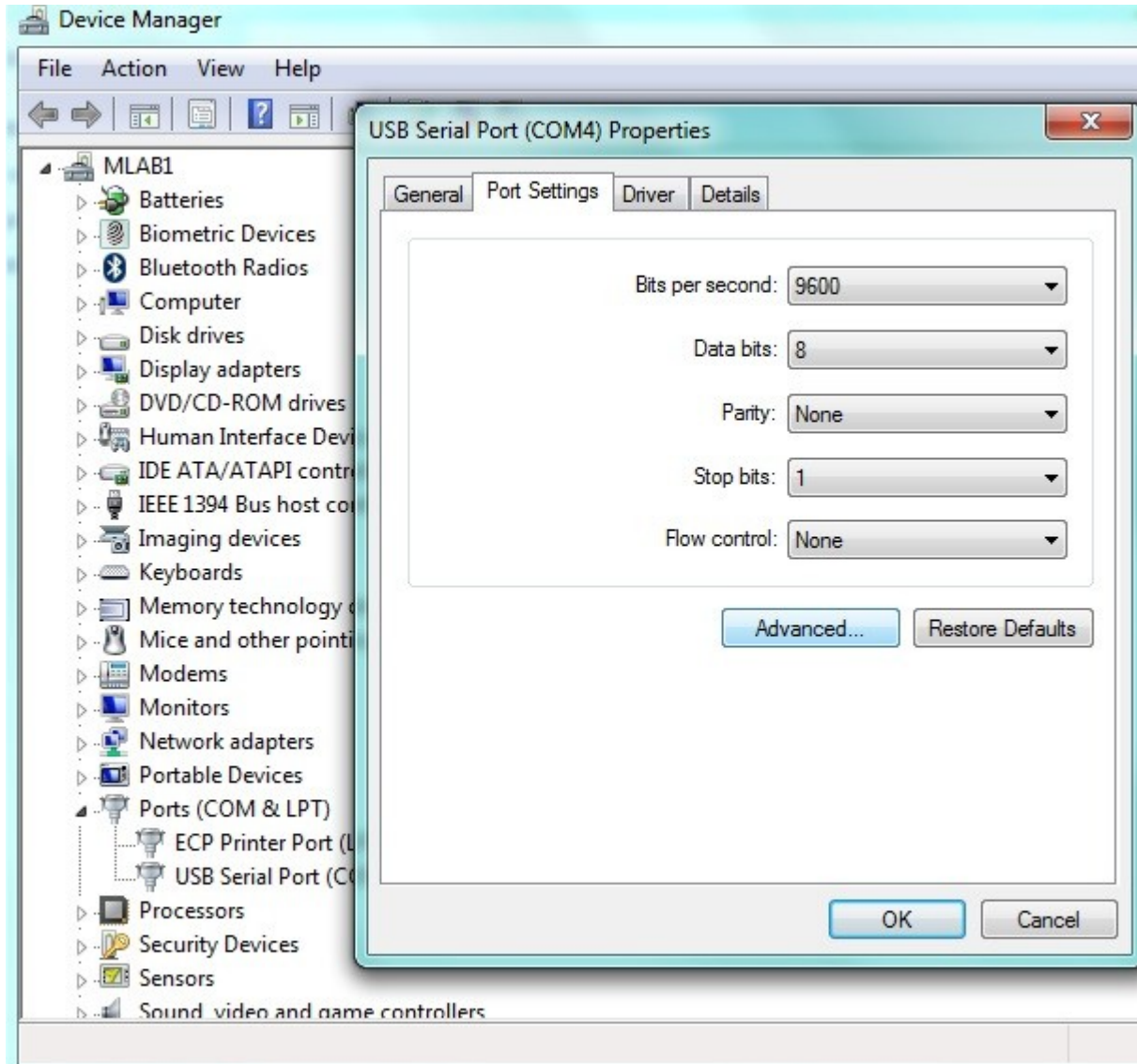
- Right click on USB Serial Port and click **Properties**



- In new window click **Port Settings**



- Click **Advanced**



- Change **COM Port Number** to what you want. Use pull down menu to view available ports. Ensure the Opto Jump software is set to the same value.

